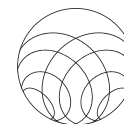




osseotouch
TOTAL CONTROL

GENERAL SURGERY



osseotouch
TOTAL CONTROL

GENERAL SURGERY

- Company profile 005
- Magneto Dynamic Technology..... 006
- Advantages of Magneto Dynamic Technology..... 007
- Magnetic Mallet008
- Kit All-in..... 011
- Easyroot 030
- Surgical Tools 035
- Sutures..... 050
- Sutures - Best of..... 053
- Motor Implanter Led 054

Index

Company profile

Osseotouch is a company composed of a team of professionals dedicated to researching innovative technological solutions to revolutionize and simplify oral surgery. Our mission is to improve the experience of surgeries for both operators and patients, thanks to our magneto dynamic patent. We are focused on innovation and ease of use, aiming to offer unparalleled comfort and convenience.

We are a dynamic company with a strong international vocation. Our ideas and patents are the cornerstone of our business, enriched by clinical collaboration with trusted physicians.

As an Italian company, we develop patents and devices with the most advanced technology available in the dental sector: magneto dynamic technology. We distribute our Magnetic Mallet and Easyroot, along with a wide range of surgical instruments, to accompany and support surgeons in an increasingly intuitive, simple, and predictable daily practice.



Meta Ergonomica, based in Turbigo (MI), Italy, has developed and patented the use of magneto dynamic forces in oral surgery. Its goal is to design and manufacture medical devices that allow procedures to be performed in a controlled, precise, and conservative manner.

Meta Ergonomica is certified according to ISO13485:2016 standards by Tuv Rheinland S.r.l. (1936) with certificate ICIM-13485-050738-00 and registered according to FDA standards. MDR EU 2017/745 Certification

Magneto Dynamic Technology

Magneto dynamic technology is based on the innovative concept of acceleration, reducing impact times and maximizing both force and effectiveness. Through magnetism, the force and acceleration intervals necessary for successful minimally invasive surgeries can be generated. Precise and constant control of forces is fundamental to ensure the safety of operators during procedures. Thanks to controlled power, tissues can be managed safely, quickly, and minimally invasively. Osseotouch is committed to collaborating exclusively with certified top-tier partners within a network dedicated to innovation and continuous production of new ideas. Through this collaboration, the company expands both globally and into new sectors, bringing Italian excellence to all five continents.



Advantages of Magneto Dynamic Technology

Speed

Magneto dynamic propulsion applies more force than manual tools, ensuring greater effectiveness in the operation.

Visibility

The lack of irrigation increases the operator's visibility, allowing control over the progressive penetration of the instrument.

Precision

Forces are focused in the treated area, minimizing their dispersion and generating more comfort for the patient and total accuracy in the procedure.

Control

Forces are applied with great precision in any procedure, ensuring total control by the operator.

Zero Cutting

It moves, replaces, reforms, condenses, without ever removing bone, leaving soft tissues intact.

Directionality

The ergonomics of the handle allow for one-handed use and facilitate positioning in the treatment area.

Coolness

The Magnetic Mallet substantially reduces heat generation, eliminating the need for irrigation.

Versatility

Multiple functions with the same handle, always using the necessary force for each procedure thanks to a high degree of progressiveness.



magnetic

M A L L E T

Magnetic Mallet | Simple, intuitive, complete



cm 25

weight Kg 4,7

A compact, manageable, and quick-to-prepare device for your surgeries.
The only command is the power selector, ranging from 1 to 4.



cm 11

cm 23

Magnetic Mallet is produced by: Meta Ergonomica S.r.l.

Via Monte Nero 19, 20029 Turbigo (MI), Tel: 0331 890280



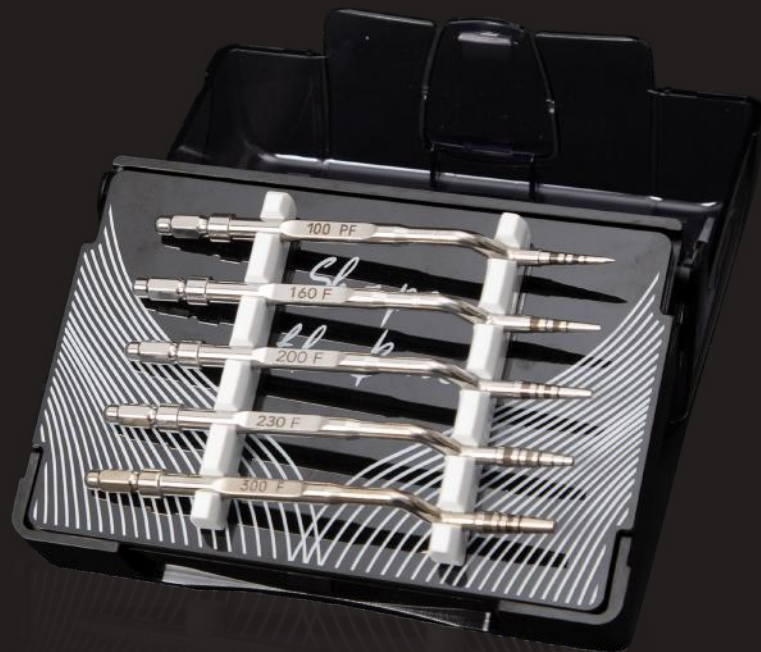
Only two connectors, one for the handle and one for the pedal. Backup button to activate the pulse alternatively to the pedal.

Magnetic Mallet | Plus Handle

Amplified power, greater effectiveness

The Plus handle is included in every Magnetic Mallet configuration. It maximizes the use of magneto dynamic technology with amplified power. Possibility to upgrade from standard handle to plus.





Kit All-in

Essential for every dental procedure

Comfortable, practical, and modular for an optimized surgical experience.

Extraction 5 Kit | Five instruments for extractions



Optional radel kit (recommended for a maximum of twelve instruments). Each instrument is reorderable individually.

Designed to provide the best geometry for each extraction

Ideal kit for atraumatic extraction of all dental elements. The kit consists of 5 curved extractors with offset handles suitable for posterior and anterior sectors.



3S Extractor – Redesigned through user feedback, this innovative tool features a reverse angulation, making it even more effective in reaching the space between socket and tooth. A small change, a big leap in performance.



Expander 5 Kit | Five progressively thickening instruments



Optional radel kit (recommended for a maximum of twelve instruments). Each instrument is reorderable individually.

Incremental kit for horizontal crest expansion

The kit consists of 3 expanders + CUT + SPLIT, curved with offset handles suitable for posterior and anterior sectors.



Expander Plus 8 Kit | Eight progressively thickening instruments with GENOA blades



Optional radel kit (recommended for a maximum of twelve instruments). Each instrument is reorderable individually.

For thinner ridges

Progressive kit for crest expansion with severe resorption, starting from the split made with sharp Genoa instruments. The kit consists of 3 expanders, CUT, SPLIT, and a curved Genoa set with offset handle suitable for posterior and anterior sectors.



GENOA 3 Kit | Three blades for safe invitation



Optional radel kit (recommended for a maximum of twelve instruments). Each instrument is reorderable individually.

Kit for horizontal crest expansion

The precise GENUA blades allow safe invitation even in the thinnest crests. Curved osteotomes with offset handles, suitable for posterior and anterior sectors.



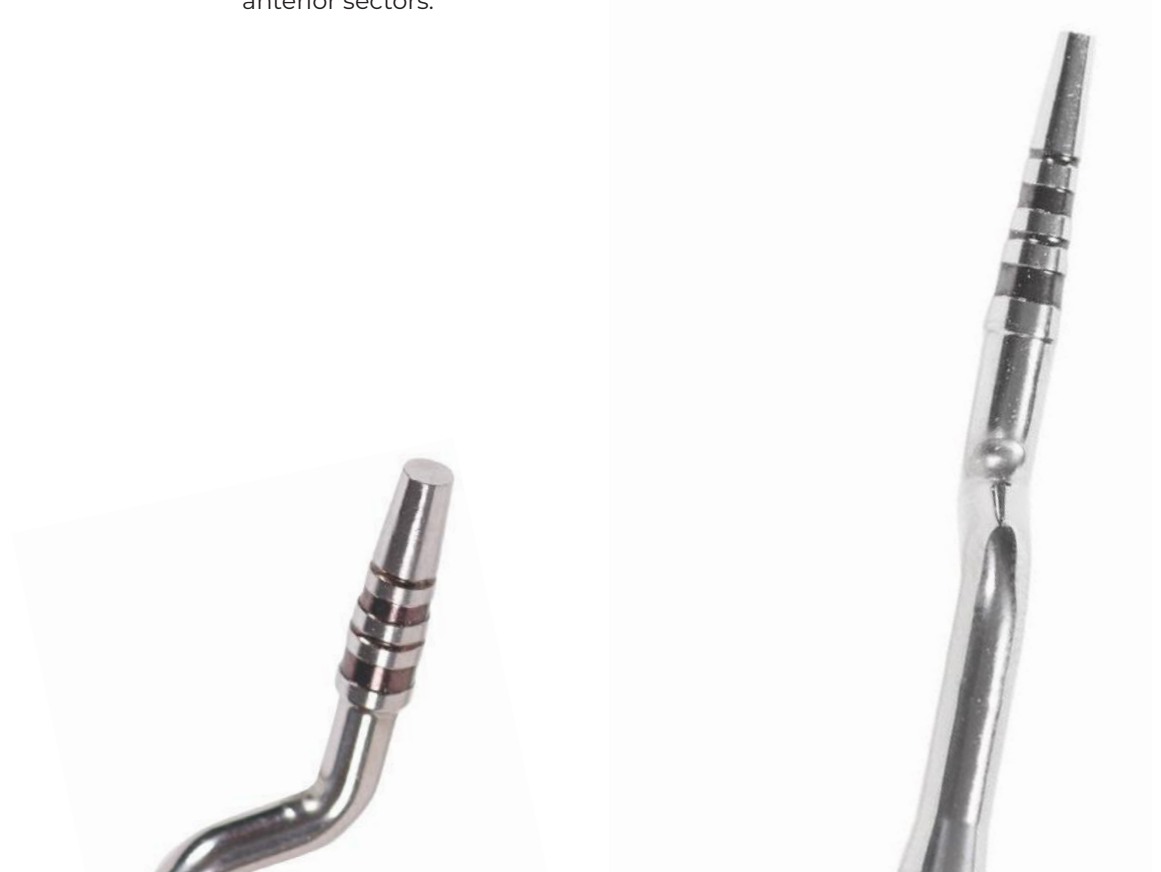
Osteotomes 7 Kit | For implant site preparation and sinus lift



Optional radel kit (recommended for a maximum of twelve instruments). Each instrument is reorderable individually.

At progressively greater widths, with clearly visible depth notches

Conceived for osteocondensation and flat-tip implant preparation, also usable for sinus lifts or LMSF technique. The kit consists of seven osteotomes with different measurements, curved with offset handles suitable for posterior and anterior sectors.



Infinity 12 Kit | Even more freedom of action



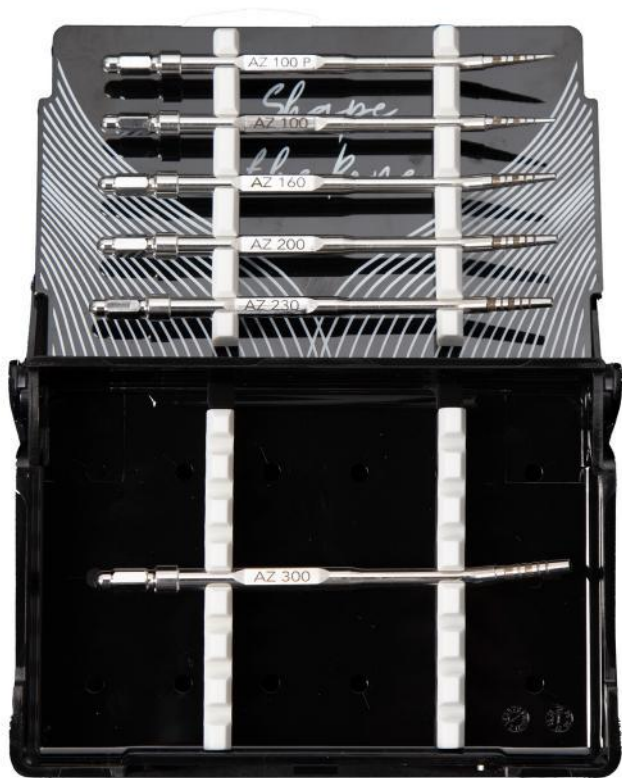
Optional radel kit (recommended for a maximum of twelve instruments). Each instrument is reorderable individually.

5 extraction levers and 7 osteotomes for different implant diameters

This set includes 12 Magnetic Mallet instruments for effective implant site preparation, offering a complete solution for safe and precise dental interventions. The kit consists of seven osteotomes and five extractors with different measurements, curved with offset handles suitable for posterior and anterior sectors.



Easy in 6 Kit | For lower jaw management



Optional ruler kit (recommended for a maximum of twelve instruments). Each instrument is reorderable individually.

Maximum bone distraction, minimum compaction

Osteotomic kit with sharp edge and concave surface, favoring bone movement. The kit consists of six offset or curved osteotomes, particularly suitable for mandibular surgery.



Black Ruby 5 Kit | With DLC coating



Optional radel kit (recommended for a maximum of twelve instruments). Each instrument is reorderable individually.

For less friction

Kit with DLC coating that makes the instrument more slippery and atraumatic for implant preparation and small maxillary sinus lifts. Curved osteotomes with offset handles suitable for posterior and anterior sectors.

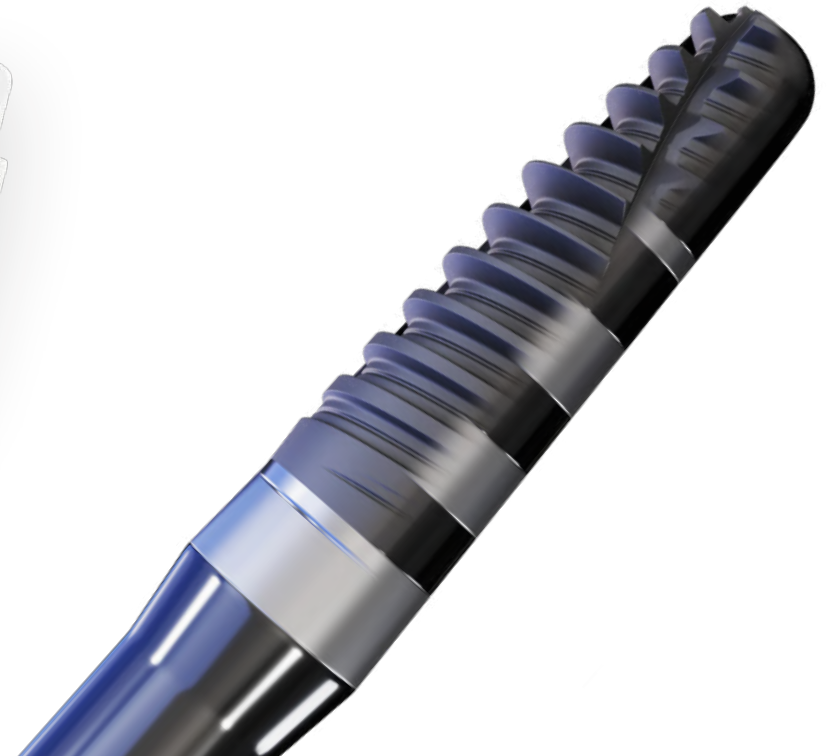


Implant Surgery Kit | For a simple workflow



Ideal for modern implantology

The choice between preparation with magneto dynamic osteotomes without the need for bone reduction, happens in total respect of anatomy. We offer maximum functionality and practicality in a complete kit, divided into two easily accessible compartments. Composed of seven drills for preparation, four manual contra-angle drivers, surgical ratchet, and Black Ruby (optional).



Kit Dynamic Guided | The only osteotomic guided surgery kit in the world



The future of implantology

Ideal kit for guided surgery adaptable to multiple implant lines. Composed of 5 osteotomes, 5 millimetered stops, 1 driver, 2 mounters, and 2 drivers, bushings. Also available in PRO version for the Osseotouch implant line. Curved osteotomes with offset handles suitable for posterior and anterior sectors



PT-1 Kit | The first pterygoid implant for Magneto Dynamic technology



Pterygoid Magneto Dynamic implantology

Kit for pterygoid surgery. Composed of three contra-angle and manual drivers, a torque wrench, two pterygoid drills, two pins. Straight osteotomes.



Elevate Kit | The ultimate kit for crestal sinus lift



Tradition and Magneto Dynamic technology

Kit designed for maxillary sinus lift equipped with millimetered stops for a safe clinical procedure. Kit composed of 5 Elevate osteotomes and 13 millimetered stops. Radel box. Curved osteotomes with offset handles suitable for posterior and anterior sectors.



Combo total black Kit | Sinus lift and implant preparation



From mini lifts to the most complex

The kit that allows you to exploit magneto dynamics for crestal sinus lift and implant preparation. Kit composed of five Elevate osteotomes and five curved Black Ruby with offset handles, suitable for posterior and anterior sectors and thirteen millimetered stops.



Blexo Pathfinder Kit | Navigate root fractures



Optional radel kit (recommended for a maximum of twelve instruments). Each instrument is reorderable individually.

Precision at the tip

Pathfinder Blexo is a set of ultra-fine instruments engineered for managing challenging extractions—such as root fractures or tight anatomical spaces. These super-tools deliver precision control to navigate root tips and fragile segments without compromising surrounding tissue. In synergy with Magnetic Mallet, Pathfinder offers surgical finesse to execute predictable, minimally invasive removals. Includes 4 fine instruments: Slim, Arc, Micro, and Longroot — ideal for delicate extractions.



Blexo AngleFit Kit | Every quadrant mastered



Optional radel kit (recommended for a maximum of twelve instruments). Each instrument is reorderable individually.

Pro-level leverage for superior extraction

Blexo AngleFit consists of a set of four quadrant-specific levers – each precisely angled for upper and lower segments – delivering unmatched leverage and control. Designed to work seamlessly with your Magnetic Mallet system, AngleFit maximizes extraction efficiency by targeting each dental quadrant with ergonomic precision. This ensures minimal patient trauma and quicker procedures, achieving the highest degree of extractive performance to date. mance to date. Kit 4 instruments with different angulations for complete access to every root from all sides.



Easy pin Kit | Simplified and controlled pin insertion for membrane fixation



Precision and safety

The Easy-Pin kit allows you to use magneto dynamics to insert pins quickly and accurately. The kit includes the surgical box, the tool (INSEP) to be applied to the handle, and the pins available in 2 different lengths.

Crownremover Kit | Removes bridges and crowns with the help of Magneto Dynamic



Effective, fast, safe

A handle that harnesses the power and control of magneto dynamics to develop a perfectly longitudinal traction that allows you to remove bridges and crowns in very short times. Kit supplied with three tips.



First | For completely drills-free surgeries



Perfect ridge engagement

The pointed tip of the instrument allows you to manage even the most represented cortical bone, completely avoiding the use of drills. This makes it much easier to determine the osteotomy axis, even in the presence of thin ridges, while maintaining the trajectory safely and predictably.

First can be added to any kit or purchased individually.



The image features a dental ultrasonic unit and a handpiece. The unit is white with a teal-colored top and a teal triangular light on the front. A teal cable is plugged into the bottom left. The handpiece is silver and black, with 'easyroot' and '99.0300.001' printed on it. The background is dark.

easyroot

Easyroot | For atraumatic and minimally invasive extractions



A compact and intuitive magneto dynamic device designed for extraction surgery: 2 powers and 6 instruments available.

The best way to approach Magneto Dynamic technology for daily use.



Easyroot is produced by: Meta Ergonomica S.r.l.
Via Monte Nero 19, 20029 Turbigo (MI), Tel: 0331 890280



Xpel
Variable tilt



3 Extractors with unique precision

The extraction instruments allow you to manage even the most complex cases without affecting soft tissues and working with zero subtraction. The geometries have been studied to facilitate insertion between the root and the alveolus by mobilizing it in a completely atraumatic way. Kit composed of two extractors and Xpel osteotome, curved with offset handle suitable for posterior and anterior.



Extractors | Extension pack



3 Extractors with unique precision

Includes two optimal instruments for extracting wisdom teeth and a third instrument for extracting particularly difficult curved roots. Kit composed of three curved extractors with offset handles suitable for posterior and anterior.



Black Tools

Italian Genius German Steel

Osseotouch distributes surgical instruments made exclusively with German steel: superior quality with no compromise on design. Ergonomics and comfort thanks to the soft-touch coating, designed and tested by the excellence of Italian dentistry.

* Not available in all countries

Black Tools | Soft-touch coating for superior ergonomics



OSDOB04-B

Obwegeser Spreader - 55x12 mm - 22 cm. Soft-touch black coating for better patient comfort.



OSDAI03-B

Intraoral Cheek Spreader cm. 11.
Soft-touch black coating for better patient comfort.
Excellent for photographic documentation.



OSDIM02-B

Minnesota Spreader cm. 14.
Soft-touch black coating for better patient comfort. For lips and cheeks. Excellent for photographic documentation.

Black Tools | Soft-touch coating for superior ergonomics



OSPAR11-B

Straight Anatomic Tweezers cm. 17,5.
Soft-touch black coating for better patient comfort.



OSMPM10-B

Microsurgery Blade Handle cm. 13,5.
Soft-touch black coating for better patient comfort.
Equipped with serrated grip for better handling.



OSMBA09-B

Surgery Blade Handle cm. 13,5.
Soft-touch black coating for better patient comfort.
Equipped with serrated grip for better handling.

Black Tools | Soft-touch coating for superior ergonomics



OSSPM07-B

Molt Periosteal Elevator Bayonet Tip cm. 18.
Soft-touch black coating for better patient comfort.
Equipped with grip to facilitate rotary movement.



OSCCM06-B

Molt Surgical Curette cm. 18.
Soft-touch black coating for better patient comfort. The working part is excluded from the coating to safeguard the tool's performance. Equipped with grip to facilitate rotary movement.



OSSGF05-B

Goldman-Fox Williams Periosteal Elevator cm. 18.
Soft-touch black coating for better patient comfort. The working part is excluded from the coating to safeguard the tool's performance. Equipped with grip to facilitate rotary movement.

Black Tools | Soft-touch coating for superior ergonomics



OSDOB08-B

Goldman-Fox Williams Double-Ended Probe cm. 18.
Soft-touch black coating for better patient comfort.
Equipped with grip to facilitate rotary movement.



OSSTF12-B

Fiala Tube Syringe with 3 Rings.
Soft-touch black coating for better patient comfort.



OSFIR14-B

Self-Sharpening **Iris** Scissors for Surgery.
Ideal for making cuts and removing sutures. Super cut. With tungsten. Soft-touch black coating for better patient comfort.

Black Tools | Soft-touch coating for superior ergonomics



OSPCM13-B

Crile Murrey Needle Holder cm. 15.
With zip closure system. Soft-touch black coating for better patient comfort.





Steel Tools

Italian Genius German Steel

Osseotouch distributes surgical instruments made exclusively with German steel: superior quality with no compromise on design.

* Not available in all countries



OSSCE04

Periosteal Elevator / Endosteal Scraper No.2 cm. 16.
Surgical steel made in Germany. Equipped with grip to facilitate rotary movement.



OSSPF13

Freer Periosteal Elevator cm. 18.
Surgical steel made in Germany. Equipped with grip to facilitate rotary movement.



OSSPP03

Prichard Periosteal Elevator cm. 18.
Surgical steel made in Germany. Equipped with grip to facilitate rotary movement.



OSLIG16

Angulated Luxating Elevator in cm. 16.
Lever for extraction with ergonomic handle.



OSLOP17

Small Angulated Out Luxating Elevator cm. 16.
Microlever with ergonomic handle.



OSLER18

Small Straight Luxating Elevator cm. 16.
Microlever, extraction lever with ergonomic handle.



OSLAI19

Angulated Luxating Elevator in Small cm. 16.
Microlever, extraction lever with ergonomic handle.



OSLAO20

Angulated Luxating Elevator in Small cm. 16.
Microlever, extraction lever with ergonomic handle.



OSLEB21

Bayonet Luxating Elevator cm. 16.
Microlever, extraction lever with ergonomic handle.



OSGOC08

Curved Bone Scraper, Stainless Steel mm. 3 cm. 15,5. Ideal for autologous bone retrieval, sharp 3 mm, interchangeable blades. Surgical steel made in Germany.



OSCAS10

Aspiration Cannula
Stainless steel made in Germany. Ø 4 mm - Length 17 cm.



OSSIM130

ASA Syringe for Biomaterials Ø mm. 3,5 cm. 16. Bone injector in surgical steel made in Germany.

Steel Tools | Design and Ergonomics



OSP CD12

Crile-Wood Needle Holder with tungsten reinforcements cm. 14. Surgical steel made in Germany.



OSC AS10

Needle Holder with tungsten reinforcements cm. 15. Surgical steel made in Germany.



OSP PA23

Curved Perry Model Anatomic Tweezers Length 12.5 cm.

Steel Tools | Design and Ergonomics



OSPMZ24

College Tweezers with serrated tips Length 15 cm.



OSPCC22

Curved Forceps for Canals and Bone/Dental Fragment Removal Length 13 cm.



OSRAR01

Curved **Roger** Scraper cm. 18.
Surgical steel made in Germany. Equipped with serrated grip for better handling.



OSBOL09

Bone Container Basin with smooth interior - 35 mm



CONTAINER1

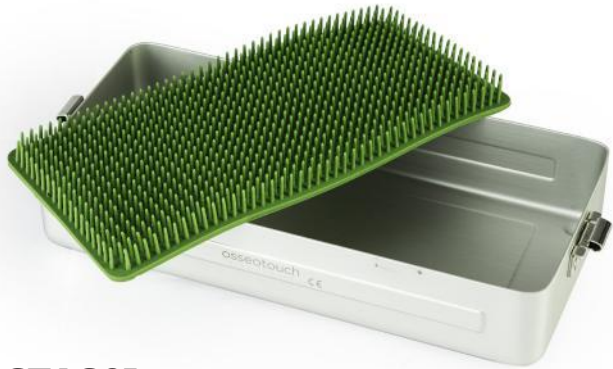
Active Box with perforated cover - 300x140x70 mm. Sterilization system guaranteed for 1200 cycles with PTFE filter (code: PTFEFILTER). No need for bagging. To bring the convenience and safety of the operating room to the next level.



PTFEFILTER

Permanent PTFE Filter 1200 cycles for mini dental container - 215.

Steel Tools | Design and Ergonomics



OSTAS01

Silicone Needle Mat 260x120 mm for positioning any type of surgical instrument.



The image features a pair of surgical forceps and a suture thread against a dark background. The forceps are positioned diagonally, with the handles at the bottom and the jaws pointing towards the top left. The suture thread is a thin, wavy line that extends from the top left towards the center. The forceps have a black handle with a circular loop at the bottom right. The text 'Osseotouch' is visible on the handle, along with 'OSPCM13-B' and '© 2013 Medtronic Aesthetics, LLC'.

Sutures

From Vitrex, exclusive to Osseotouch

Osseotouch sutures are designed to ensure minimally invasive procedures and maximum functionality: thin and ultra-thin gauges, Japanese steel needles, absorbable threads, and a wide selection of transparent threads for maximum aesthetic results in modern dentistry.

* Not available in all countries

Sutures | From plastic surgery to modern dentistry



MONOLAC MONOFILAMENT VIOLET

Absorbable, monofilament, synthetic, high tensile strength. Excellent manipulability, medium-term healing. Available in white for maximum aesthetics. Composition: Glycolic Acid + Caprolactone



SILON MONOFILAMENT BLUE

Non-absorbable, monofilament, synthetic, perfectly smooth, excellent knotting ability, easy to handle, loss of tensile strength after long-term implantation. Composition: Polyamide 6



TERVALON BRAIDED GREEN

Non-absorbable, multifilament, synthetic, high tensile strength, no capillary effect, well-tolerated by tissues, low friction. Excellent knotting ability. Composition: Polyester

Sutures | From plastic surgery to modern dentistry



CHIRASORB BRAIDED VIOLET

Absorbable (medium and fast), multifilament, coated, synthetic, high tensile strength, reduced capillary effect, medium-term healing. Also available in white for maximum aesthetics.

Composition: 90% Glycolic Acid + 10% L-lactic Acid



SILK BRAIDED BLACK

Non-absorbable, multifilament, natural, coated and siliconized, no capillary effect, loss of tensile strength after long-term implantation.

Composition: Natural Silk



CHIRAFLOX MONOFILAMENT BLUE

Non-absorbable, multifilament, optimal smoothness, excellent knotting ability, high tensile strength. No splitting under considerable stress.

Composition: PVDF (Polyvinylidene Fluoride)

Sutures | Best of

Code	Material	Wire diameter	Wire length (cm)	Needle type	Body Tip	Needle length
Chirasorb braided violet resorbable glycolide and L-lactide multifilament suture						
LV 0212	Chirasorb braided violet	3/0	75	⅜ circle reverse cut	DS	19
LV 0211	Chirasorb braided violet	4/0	75	⅜ circle reverse cut	DS	19
LV 0205	Chirasorb braided violet	5/0	45	⅜ circle reverse cut	DS	15
LV 0201	Chirasorb braided violet	6/0	45	⅜ circle reverse cut	DS	12
Monolac monofil violet resorbable glycolide and E-Caprolactone monofilament suture						
MV 0212	Monolac violet	3/0	75	⅜ circle reverse cut	DS	19
MV 0211	Monolac violet	4/0	75	⅜ circle reverse cut	DS	19
MV 0205	Monolac violet	5/0	45	⅜ circle reverse cut	DS	15
MV 0201	Monolac violet	6/0	45	⅜ circle reverse cut	DS	12
Silon monofil blue non-resorbable polyamide monofilament suture						
4021	Silon monofil blue	3/0	75	⅜ cylindrical body circle	DR	18
SM 2362	Silon monofil. blue	4/0	75	⅜ circle reverse cut	DS	15
SM 2367	Silon monofil blue	4/0	45	⅜ circle reverse cut	DS	19
SM 2056	Silon monofil blue	5/0	45	⅜ reverse microdot circle	DSM	12
SM 2055	Silon monofil blue	6/0	45	⅜ reverse microdot circle	DSM	12
Tervalon braided green non-resorbable polyester multifilament suture						
TG 4554	Tervalon braid. green	3/0	75	⅜ circle reverse cut	DS	19
TG 4553	Tervalon braid. green	4/0	75	⅜ circle reverse cut	DS	19
TG 4547	Tervalon braid. green	5/0	45	⅜ circle reverse cut	DS	15
TG 4538	Tervalon braid. green	4/0	45	⅜ circle reverse cut	DS	12
Silk braided black non-resorbable silicon silk multifilament suture						
3336	Silk braided black	3/0	75	⅜ circle reverse cut	DS	19
3335	Silk braided black	4/0	45	⅜ circle reverse cut	DS	19
3320	Silk braided black	4/0	45	⅜ circle reverse cut	DS	15
3154	Silk braided black	3/0	45	½ circle cylindrical body	HRT	17
Chiraflon monofil Blue non-resorbable PVDF (polyvinylidene fluoride) monofilament suture						
TF 6101	Chiraflon monofil. Blue	6/0	45	⅜ circle reverse cut	DS	12
TF 6105	Chiraflon monofil. Blue	5/0	45	⅜ circle reverse cut	DS	15
TF 6106	Chiraflon monofil. Blue	4/0	45	⅜ circle reverse cut	DS	15

Motor Implanter Led

Precision, strength, safety

Implanter, the perfect assistant for high-precision dental implant treatments. Led technology and touch screen with customized programs.

* Not available in all countries



Implanter | Intuitive user interface



Powerful and stable contra-angle

The LED contra-angle ensures optimal visibility for precise and efficient treatments. The high precision of the contra-angle, with minimal oscillations, allows stable torque delivery at both high and low speeds. Advanced bearings ensure performance and durability.

Zero manual configurations

A large color screen ensures a clear display of images for each procedure. Pre-set parameters eliminate the need for manual configurations.



www.osseotouch.com

@Osseotouch   



ITALIAN DISTRIBUTOR

OSNRGY S.r.l Piazza Garibaldi 9
Gallarate (VA) 21013 Italy

contact@osseotouch.com
0331 15 35 586
329 744 3204



U.S.A DISTRIBUTOR MANUFACTURER

Osseotouch LLC 20585 County Road 13,
Suite B, Fairhope, AL 36532

cs@osseotouch.com
+1-251-210-7761



DISTRIBUDOR PARA ESPAÑA

Osseotouch Iberica SL Carrer de Pizarro 12,
Puerta 1 Valencia 46004

+34662401423