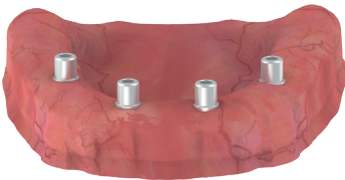
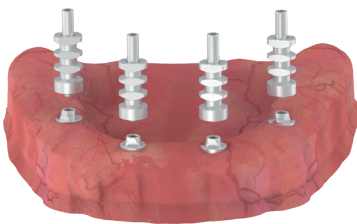


MULTI-UNIT SCREW RETAINED RESTORATION WORKFLOW



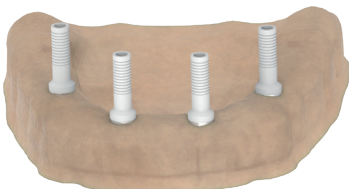
Appropriate multi unit abutments fixed in implants.



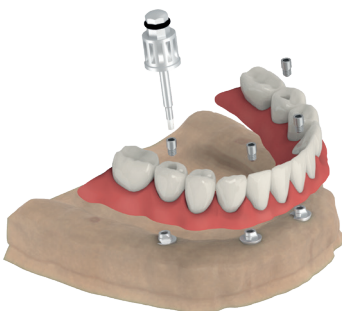
Impression is taken with multi-unit open impression copings. Comfort caps are fixed onto multi-unit abutments so that the sharp parts of the multi-unit abutments do not damage the patient's mouth while temporary denture is prepared.



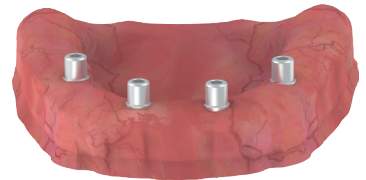
Impression is transferred in stone model.



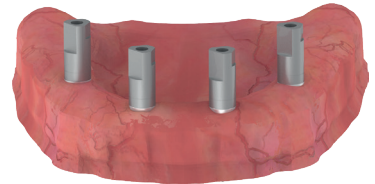
Plastic burn-out cylinders are used for casting.



Screw-retained denture is fabricated and delivered to clinic.



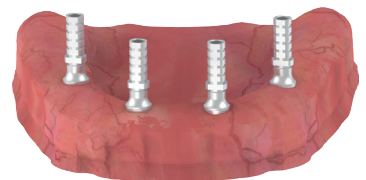
Appropriate multi unit abutments fixed in implants.



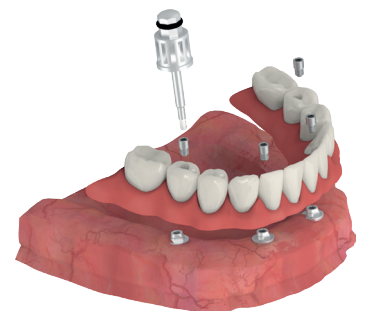
Impression is taken with multi-unit scan bodies. Comfort caps are fixed onto multi-unit abutments so that the sharp parts of the multi-unit abutments do not damage the patient's mouth while temporary denture is prepared.



Impression is transferred digitally and 3D model is printed. Digital analogs are used.



Temporary abutments can be used for temporization.



CAM-milled Screwretained denture is fabricated and delivered to patients's mouth.